




11/215 Aspinall Street Watson ACT

3  2  2 

If you are looking for a sun-drenched townhouse in the Inner North, look no further!

This residence boasts three generous bedrooms, two decent bathrooms and two fabulous open plan living areas, one of which spills out into the sunny outdoor entertaining area.

The large chefs kitchen has plenty of storage, integrated dishwasher and gas cooking.

Full of sun and meticulously maintained, do not miss out on inspecting this exquisite home.

Features:

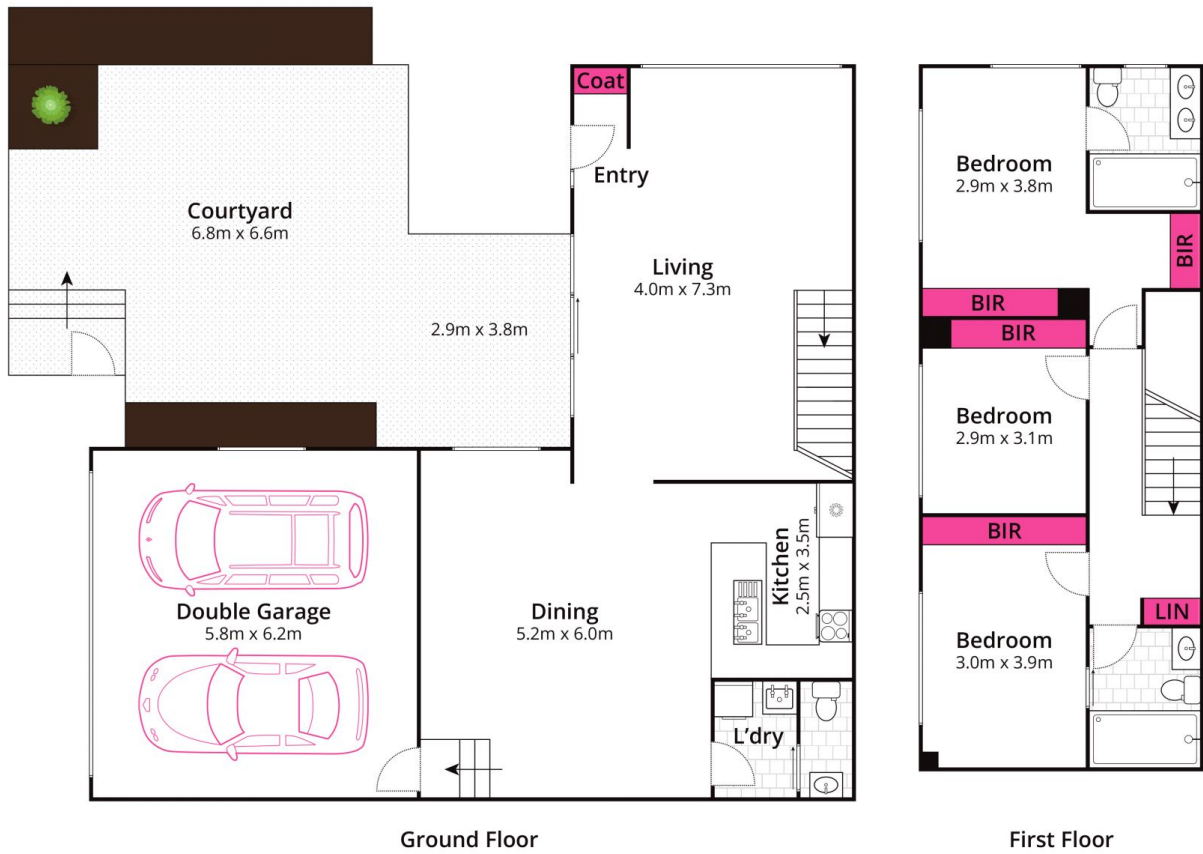
[For full version visit the website](https://www.borisproperty.com.au/lease/act/inner-north/watson/residential/townhouse/8160679)

Type : Townhouse
Price : \$900 per week
View : <https://www.borisproperty.com.au/lease/act/inner-north/watson/residential/townhouse/8160679>



Liz Elliott
0402219727

<https://www.borisproperty.com.au>



Whilst bwr.com.au has made every attempt to ensure the accuracy of the floor plan contained here, measurements are approximate and no responsibility is taken for any error, omission, or mis-statement. This plan is for illustrative purposes only.

11/215 Aspinal Street, Watson

BORIS.
PROPERTY