



90/5 Light Street Griffith ACT

2  2  2 

This luxurious apartment in Renaissance 3 offers a prime location in central Canberra, with easy access to Manuka and Kingston. With green views over Light Street, it provides a serene and peaceful environment away from street noise. The apartment boasts an easterly aspect, ensuring plenty of natural light throughout the day.

Upon entering, you're greeted with a well-designed layout and generous protected balcony - perfect for lazy mornings in the sun.

The kitchen is equipped with high-end Franke appliances and boasts stunning classic finishes. The Euro laundry includes both a washer and dryer for added convenience.

You'll find a spacious master bedroom with walk in robe leading to the luxury ensuite. The second bedroom opens

View : <https://www.borisproperty.com.au/lease/act/inner-south/griffith/residential/apartment/7943400>



Liz Elliott
0402219727



RENAISSANCE

MANUKA

BUILDING 2B

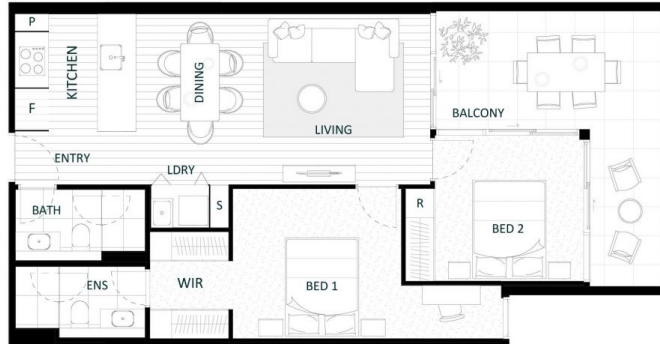
LEVEL 1-3

2C



Bedrooms: 2 Bathrooms: 2 Car Spaces: 2

Living Area: 74m²
Balcony: 16m²
Total Area: 90m²
Units: 72, 81, 90



1:100 @A4

IMPORTANT DISCLAIMER, PLEASE READ CAREFULLY Indicative only. Dimensions, design features, floor areas, specifications and room configurations subject to change without notice.
Any furniture shown is not included. The Development is not completed and so the final product may differ from depicted in this floorplan. Buyer should refer to and rely on the Identification Plan include in the Disclosure documents. Subject to variations in accordance with contract Terms.

