



201/86-88 Northbourne Avenue Braddon ACT

1  1  1 

AVAILABLE NOW!

Apartment 201 has just had a fantastic makeover with new paint and carpet throughout and will suit the most fastidious occupant.

This spacious apartment is bigger than comparable apartments, offers a true northerly aspect and a private outlook into mature trees from the covered balcony.

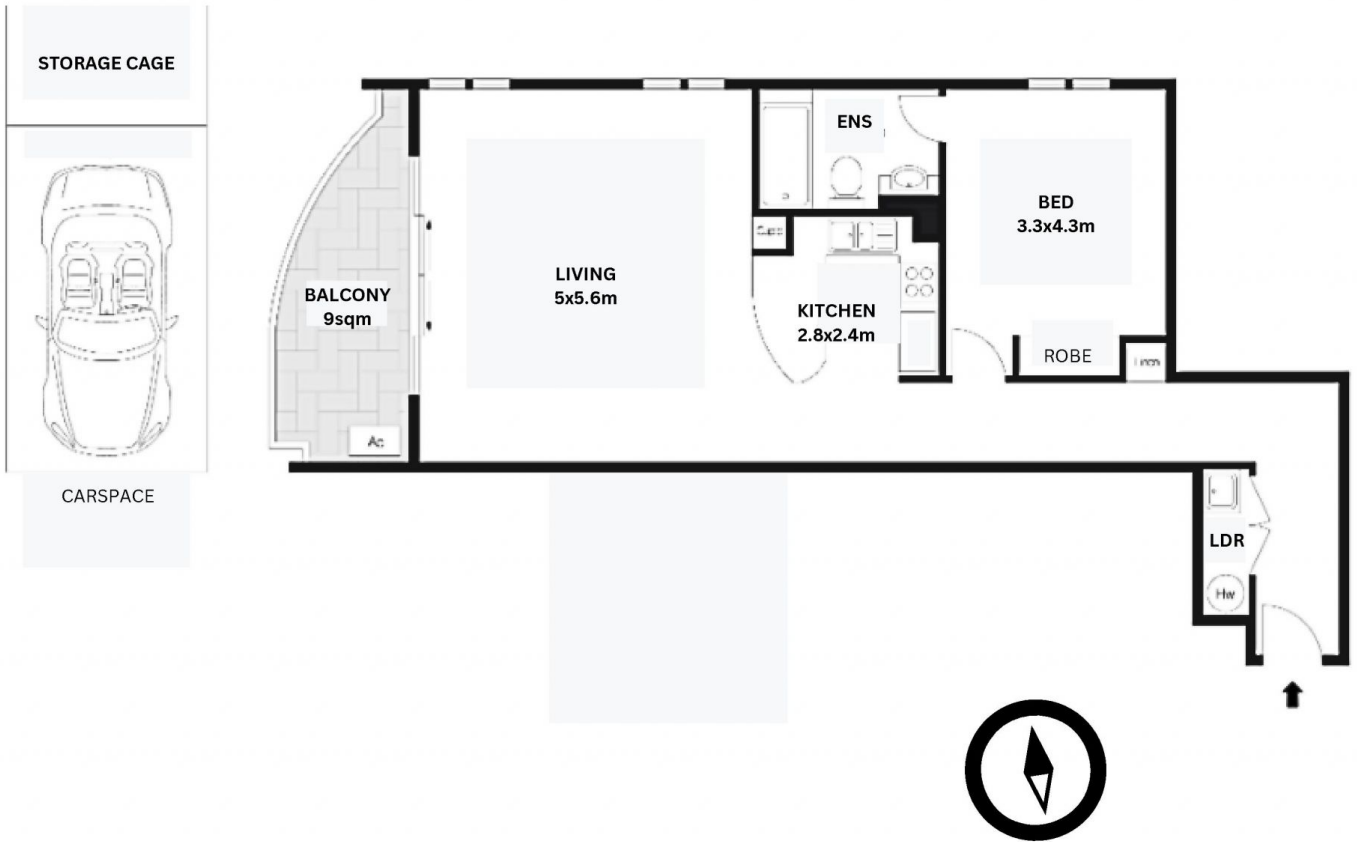
Dual aspect windows mean this property is cool in summer and warm in winter and running costs are low.

The kitchen features electric cooking, granite benchtops and a dishwasher.

The bathroom features a bath big enough to soak in!

View : <https://www.borisproperty.com.au/lease/act/inner-north/braddon/residential/apartment/7282914>

<https://www.borisproperty.com.au>



'THE PHOENIX'

201/86-88 NORTHBOURNE AVENUE BRADDON

All information contained herein is gathered from a source we believe to be reliable. However we cannot guarantee its accuracy and interested parties should rely on their own enquiries

BORIS.