



26/7 Sydney Avenue Barton ACT

1  1  1 

Brilliantly located in the tightly held Realm Quarters, this sub-penthouse is high up on level 7, is extremely spacious and has spectacular views over Forrest, Manuka and Red Hill.

Beautifully furnished and elegantly appointed, this property will suit the fastidious owner or investor looking for good space, luxury inclusions, privacy and security. The property also features a winter balcony, giving you inside/outside options all year round.

The lifestyle at Realm Quarters is second to none, with fantastic precinct amenity at your doorstep. Lake Burley Griffin, Kingston and Manuka are close by and is walking distance to DFAT and Parliament House. The highly sought after Telopea Park Public School is across the road.

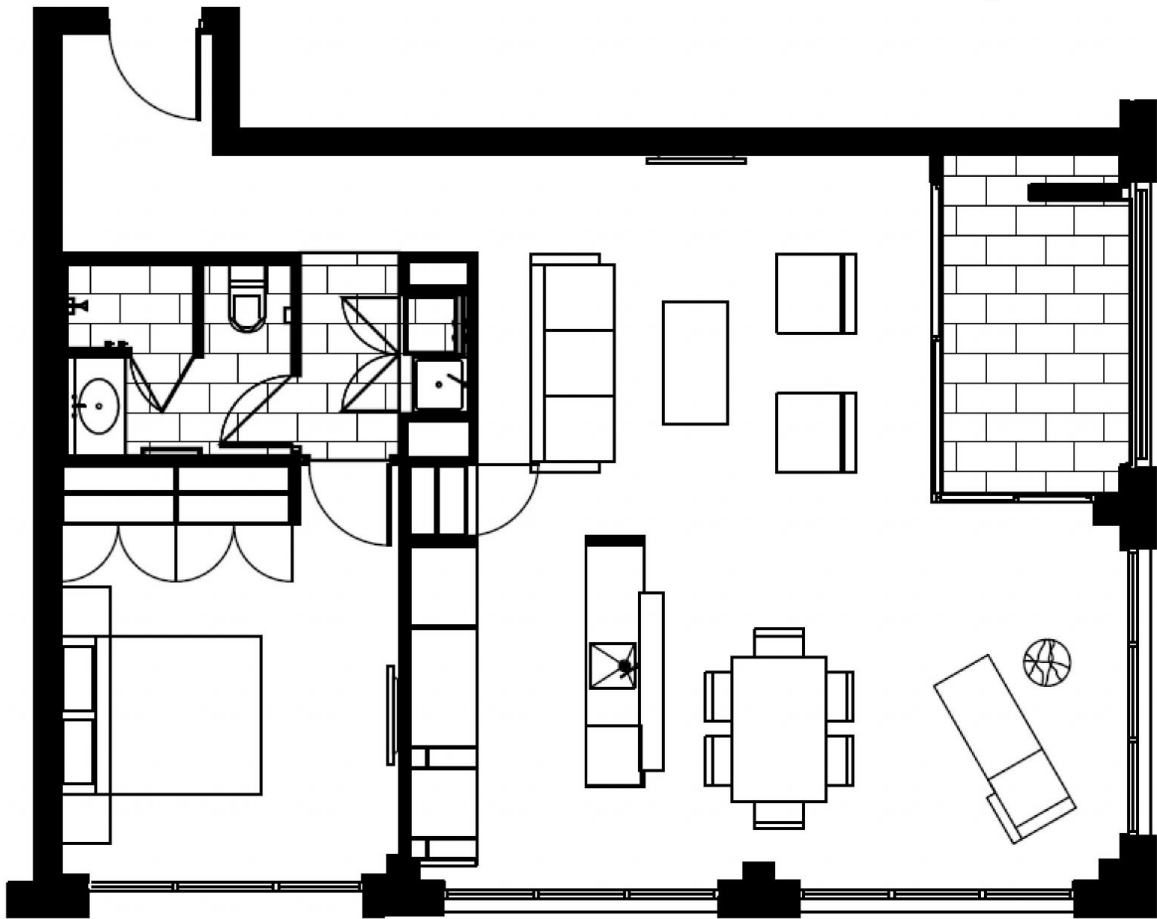
Price : \$ 630,000
Building Size : 80 sqm
View : <https://www.borisproperty.com.au/sale/act/inner-south/barton/residential/apartment/7059906>



Boris Teodorowych
0402219727



Sarah Davies
0488 555 110



INTERNAL	BALCONY	CAR SPACES
80m ²	7.5m ²	1



26/7 SYDNEY AVENUE, BARTON

Scale in meters. Indicative only. Dimensions are approximate. All information contained herein is gathered from source we believe to be reliable. However we cannot guarantee its accuracy and interested parties should rely on their own enquiries

BORIS.