



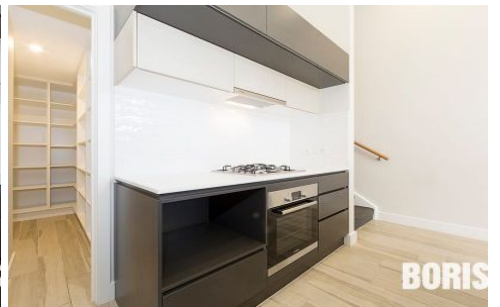
BORIS



BORIS



BORIS



BORIS

137 Stockman Avenue Lawson ACT

2 2 1

Beautiful Botanical!

Terrific, contemporary Terrace home with vast 4.5m soaring ceiling to the entire downstairs living area.

Centrally located in the heart of Lawson, this well presented two bedroom townhouse offers open plan living space, spacious kitchen with walk in pantry, and two segregated generous bedrooms both with ensuites. Every detail has been considered in the design of this home.

A lifestyle of convenience is of offer here - the property is close to local schools and shops, and just a short drive to University of Canberra, the new University Hospital, and a mere 5 minute drive to Belconnen Town Centre.

Features:

- ? Fabulous kitchen with walk in pantry and GAS cooktop
- ? Segregated bedrooms with excellent wardrobe space
- ? Two ensuites and powder room
- ? Ducted reverse cycle air conditioning throughout

View : <https://www.borisproperty.com.au/lease/act/belconnen/lawson/residential/townhouse/5541476>



Lee-Anne Radstaak
0402219727